

Chatham Hall

KATHY HALL



Foxton Field
Quilt Design:
Krisanne Watkins
Quilt Size: 95 3/4" x 97 3/4"
andoverfabrics.com

andover • makower.uk

Free Pattern Download Available

1384 Broadway New York, NY 10018
Tel. (800) 223-5678 • andoverfabrics.com

Foxton Field



Featuring Andover Fabrics new Collection: Chatham Hall by Kathy Hall

Quilt designed by Krisanne Watkins of Quail Valley Quilts

Quilt finished 95 3/4" x 97 3/4"

Cutting Directions

Note: Read assembly directions before cutting patches. Borders are cut to exact length required plus 1/4" seam allowance. WOF designates the width of fabric from selvedge to selvedge (approximately 42" wide).

Fabric A Cut (9) 1 1/2" x WOF strips. Sub-cut the strips into (240) 1 1/2" squares.

Fabric B Cut (6) 1 1/2" x WOF strips. Sub-cut the strips into (160) 1 1/2" squares.

Fabric C Cut (6) 2 7/8" x WOF strip. Sub-cut the strip into (80) 2 7/8" squares.

Fabric D Cut (5) 2 1/2" x WOF strips. Sub-cut the strips into (80) 2 1/2" x 3 1/2" strip. **CUT FIRST**
Cut (2) 8 1/2" x 96 1/4" Length of Fabric (LOF) strips. **CUT SECOND**
Cut (2) 8 1/2" x 82 1/4" LOF strips. **CUT THIRD**

Fabric E Cut (1) 2 7/8" x WOF strip. Sub-cut the strip into (3) 2 7/8" squares.
Cut (4) 1 1/2" x WOF strips. Sub-cut the strips into (86) 1 1/2" squares.
Cut (2) 2 1/2" x WOF strips. Sub-cut the strips into (20) 2 1/2" squares.

Fabric F Cut (1) 2 7/8" x WOF strip. Sub-cut the strip into (4) 2 7/8" squares.
Cut (1) 1 1/2" x WOF strip. Sub-cut the strip into (8) 1 1/2" squares.
Cut (5) 1 1/2" x WOF strips. Sub-cut the strips (80) 1 1/2" x 2 1/2" strips.

Fabric G Cut (1) 2 7/8" x WOF strip. Sub-cut the strip into (12) 2 7/8" squares.
Cut (1) 1 1/2" x WOF strip. Sub-cut the strip into (24) 1 1/2" squares.

Fabric Requirements

		Yardage	Fabric
Fabric A	blocks	1/2 yard	9001-N
Fabric B	blocks	1/3 yard	9003-N
Fabric C	blocks	5/8 yard	8888-WW
Fabric D	blocks, border	3 1/4 yards	8996-L
Fabric E	blocks	1/2 yard	8999-L
Fabric F	blocks	1/2 yard	9000-L
Fabric G	blocks	1/4 yard	9000-NO
Fabric H	blocks	1/4 yard	9001-L
Fabric I	blocks	3/8 yard	9003-NR
Fabric J	blocks	1/4 yard	8998-N
Fabric K	blocks	1/4 yard	9003-L
Fabric L	blocks, border, binding	3 7/8 yards	9002-L
Fabric M	blocks	1/4 yard	9002-LY
Fabric N	blocks, border	2 1/2 yards	8997-L
Backing		3 yards	AW8680-L

Fabric H Cut (1) 2 7/8" x WOF strip. Sub-cut the strip into (14) 2 7/8" squares.
Cut (1) 1 1/2" x WOF strip. Sub-cut the strip into (28) 1 1/2" squares.

Fabric I Cut (2) 2 7/8" x WOF strips. Sub-cut the strips into (17) 2 7/8" squares.
Cut (2) 1 1/2" x WOF strips. Sub-cut the strips into (34) 1 1/2" squares.

Fabric J Cut (1) 2 7/8" x WOF strip. Sub-cut the strip into (9) 2 7/8" squares.
Cut (1) 1 1/2" x WOF strip. Sub-cut the strip into (18) 1 1/2" squares.

Fabric K Cut (1) 2 7/8" x WOF strip. Sub-cut the strip into (2) 2 7/8" squares.
Cut (1) 1 1/2" x WOF strip. Sub-cut the strip into (4) 1 1/2" squares.

Fabric L Cut (1) 2 7/8" x WOF strip. Sub-cut the strip into (9) 2 7/8" squares.
Cut (1) 1 1/2" x WOF strip. Sub-cut the strip into (18) 1 1/2" squares.

Cutting Directions - Continued

- Cut (4) 15 1/2" x WOF strips. Sub-cut the strips into (8) 15 1/2" squares. Cut each 15 1/2" square across both diagonals to make (32) Side Triangles.
- Cut (2) 8" x WOF strips. Sub-cut the strips into (8) 8" squares. Cut each 8" square across one diagonal to make (16) Corner Triangles.
- Cut (4) 2" x WOF strips. Sew the strips together end to end with diagonal seams and cut (2) 2" x 79 1/4"
- Cut (4) 2" x WOF strips. Sew the strips together end to end with diagonal seams and cut (2) 2" x 80 1/4"
- Cut (10) 2 1/2" x WOF strips for the binding.

Fabric M

- Cut (1) 2 7/8" x WOF strip. Sub-cut the strip into (10) 2 7/8" squares.
- Cut (1) 1 1/2" x WOF strip. Sub-cut the strip into (20) 1 1/2" squares.

Fabric N

- Cut (2) 4 1/2" x 83" LOF strips centered on the cream strip. **CUT FIRST**
- Cut (2) 4 1/2" x 81" LOF strips centered on the cream strip. **CUT SECOND**
- Cut (3) 4 1/2" x 71 1/4" LOF strips centered on the cream strip. **CUT THIRD**

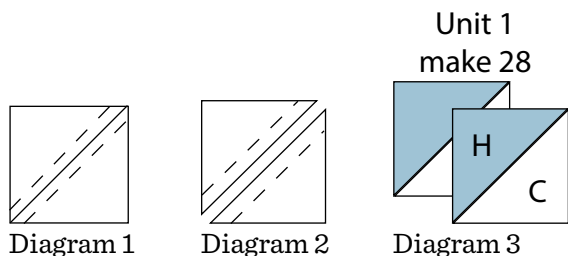
Backing

- Cut (1) 104" x 106" rectangle to make the backing. (*based upon 108" wide fabric*)

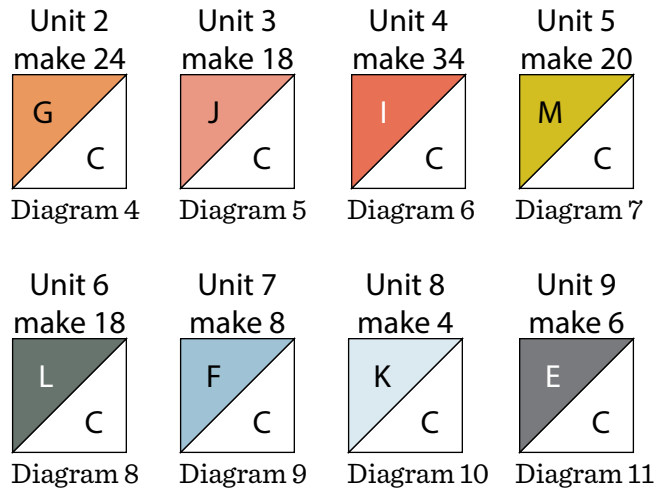
Making the Quilt

1. Block Assembly

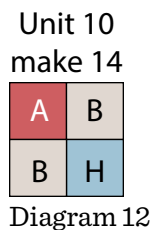
Place (1) 2 7/8" square Fabric C square on top of (1) 2 7/8" Fabric H square, right side together. Draw a line across the diagonal of the top square (Diagram 1). Sew 1/4" away from each side of the drawn diagonal line (Diagram 1). Cut the (2) squares apart on the drawn diagonal line (Diagram 2) to make (2) half-square triangles (Diagram 3). Trim the half-square triangles to measure 2 1/2" square to make (2) Unit 1 squares. Repeat to make (28) Unit 1 squares total.



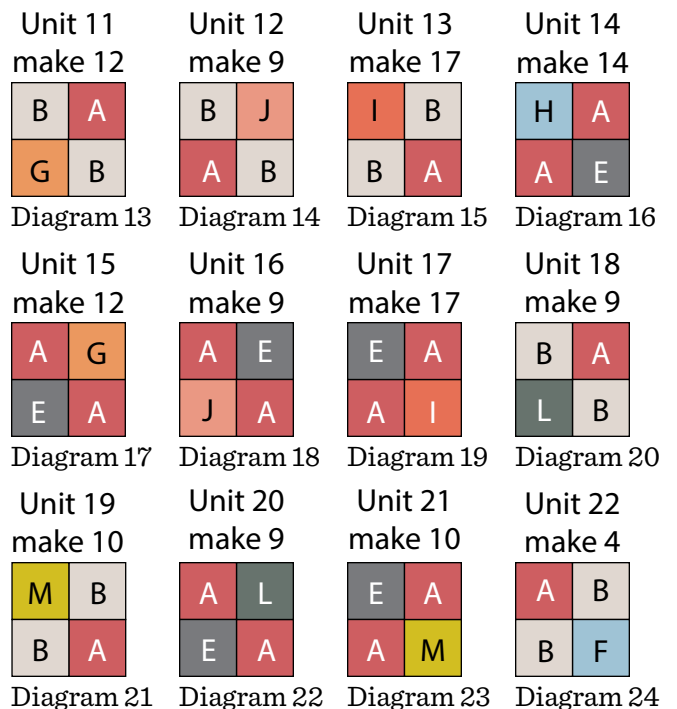
2. Repeat Step 1 and refer to Diagrams 4-11 for fabric identification and placement to make the indicated number of units for Unit 2 through Unit 9.



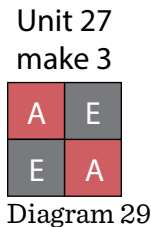
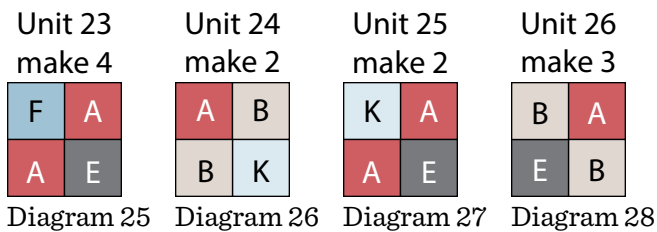
3. Sew (1) 1 1/2" Fabric A square to the left side of (1) 1 1/2" Fabric B square to make (1) AB strip. Sew (1) 1 1/2" Fabric B square to the left side of (1) 1 1/2" Fabric H square to make (1) BH strip. Sew the AB strip to the top of the BH strip to make (1) Unit 10 square (Diagram 12). Repeat to make (14) Unit 10 squares.



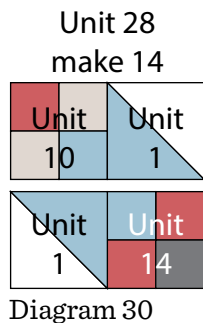
4. Repeat Step 3 and refer to Diagrams 13-29 for fabric identification and placement to make the indicated number of units for Unit 11 through Unit 27.



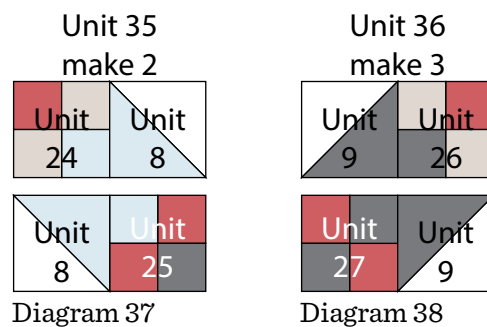
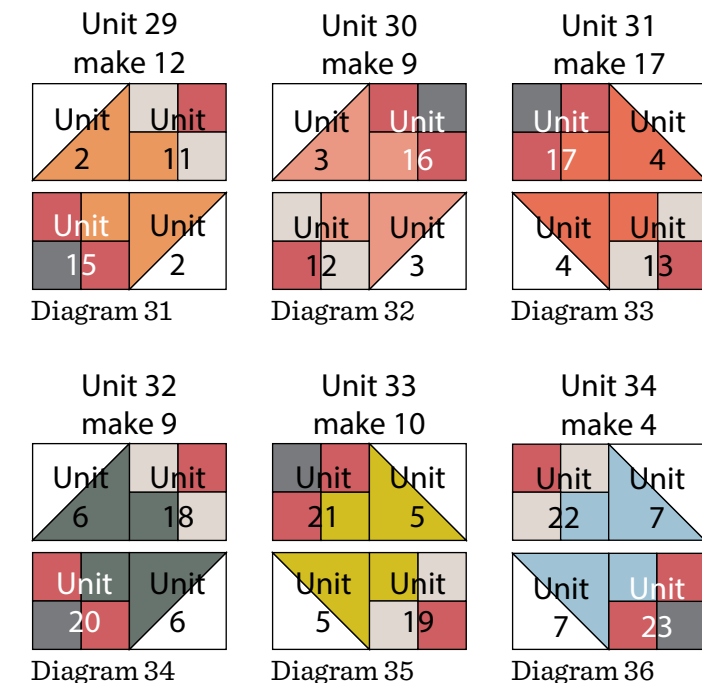
Foxton Field



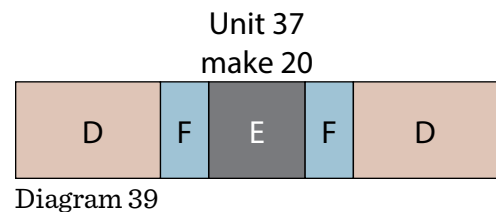
5. Sew (1) Unit 10 square to the left side of (1) Unit 1 square to make (1) Top Unit Strip. Pay attention to the orientation of the units. Sew (1) Unit 1 square to the left side of (1) Unit 14 square to make (1) Bottom Unit Strip. Sew the Top Unit Strip to the top of the Bottom Unit Strip to make (1) Unit 28 square (Diagram 30). Repeat to make (14) Unit 28 square total.



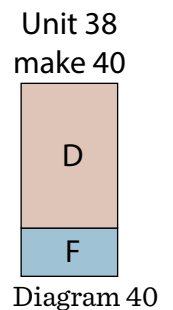
6. Repeat Step 5 and refer to Diagrams 31-38 for fabric identification and placement to make the indicated number of each unit for Unit 29 through Unit 36. Pay attention to unit orientations.



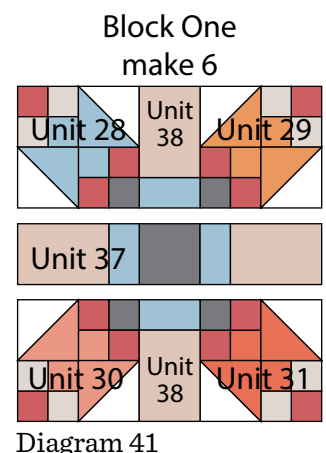
7. Sew together (1) $2\frac{1}{2}$ " x $3\frac{1}{2}$ " Fabric D strip, (1) $1\frac{1}{2}$ " x $2\frac{1}{2}$ " Fabric F strip, (1) $2\frac{1}{2}$ " Fabric E square, (1) $1\frac{1}{2}$ " x $2\frac{1}{2}$ " Fabric F strip and (1) $2\frac{1}{2}$ " x $3\frac{1}{2}$ " Fabric D strip, in that order, to make (1) Unit 37 strip (Diagram 39). Repeat to make (20) Unit 37 strips total.



8. Sew (1) $2\frac{1}{2}$ " x $3\frac{1}{2}$ " Fabric D strip to the top of (1) $1\frac{1}{2}$ " x $2\frac{1}{2}$ " Fabric F strip to make (1) Unit 38 strip (Diagram 40). Repeat to make (40) Unit 38 strips total.



9. Sew (1) Unit 28 square to the left side of (1) Unit 38 strip. Sew (1) Unit 29 square to the right side of the Unit 38 strip to make (1) Top Block Strip. Pay attention the to unit orientations. Sew (1) Unit 30 square to the left side of (1) Unit 38 strip. Sew (1) Unit 31 square to the right side of the Unit 38 strip to make (1) Bottom Block Strip. Pay attention the to unit orientations. Sew the Top Block Strip to the top of (1) Unit 37 strip. Sew the Bottom Block Strip to the bottom of the Unit 37 strip to make (1) Block One square (Diagram 41). Repeat to make (6) Block One squares total.



Foxton Field

10. Repeat Step 9 and refer to Diagrams 42-45 for fabric identification and placement to make the indicated number of each block for Block Two through Block Five. Pay attention to unit orientations.

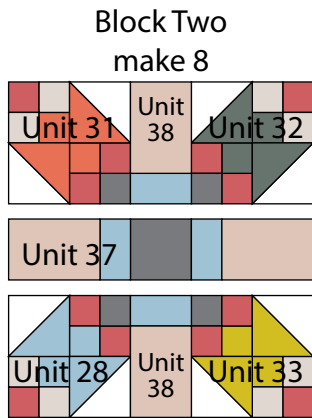


Diagram 42

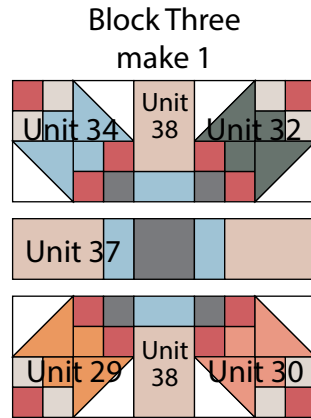


Diagram 43

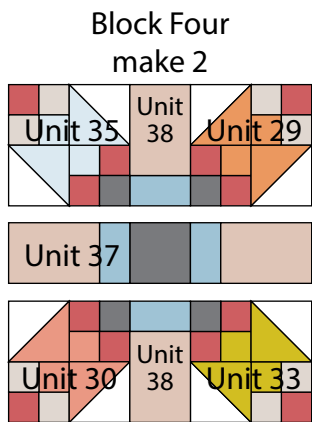


Diagram 44

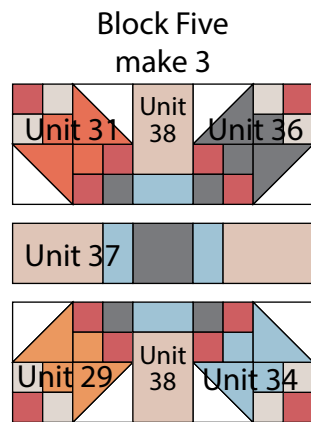


Diagram 45

11. Refer to Diagram 46 for fabric identification and placement to sew together (4) Fabric L Corner Triangles, (8) Side Triangles, (2) Block One squares, (2) Block Two squares and (1) Block Five square to make (1) Column One. Trim column to measure approximately 14 5/8" x 71 1/4". Make sure to leave 1/4" seam allowance at block corners.

12. Repeat Step 11 and refer to Diagrams 47-49 for fabric identification and placement to make (1) Column Two, (1) Column Three and (1) Column Four

Column One

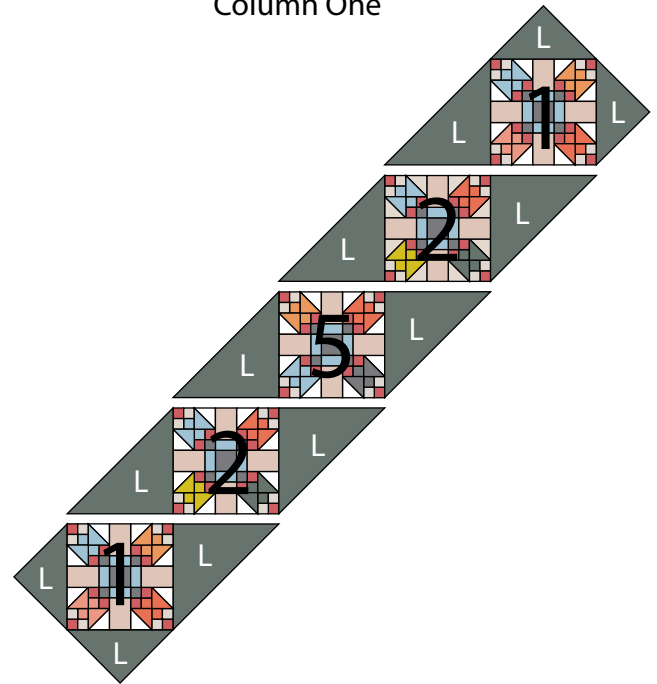


Diagram 46

Column Two

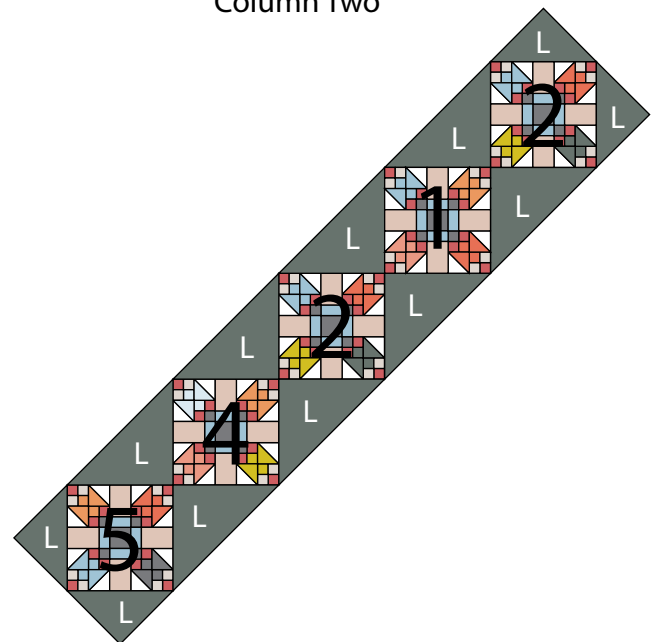


Diagram 47

Foxton Field

Column Three

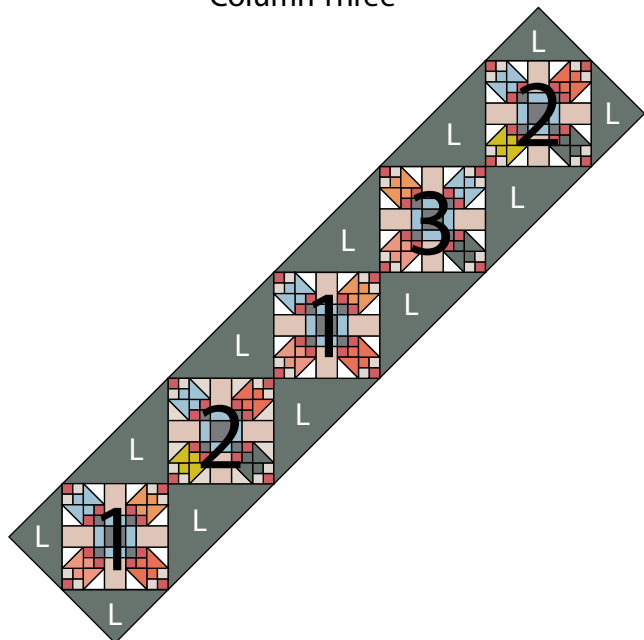


Diagram 48

Column Four

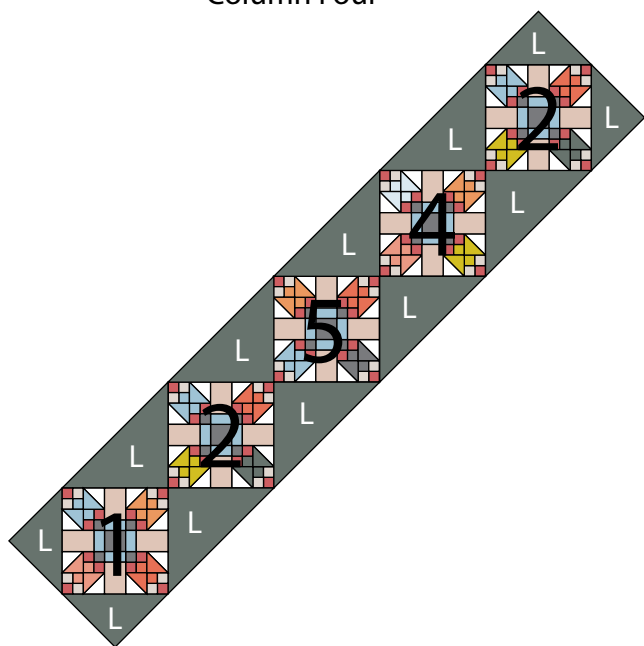


Diagram 49

Quilt Top Assembly

(Refer to the Quilt Layout when assembling the quilt top.)

- 13.** Sew together Column One, (1) 4 1/2" x 71 1/4" Fabric N strip, Column Two, (1) 4 1/2" x 71 1/4" Fabric N strip, Column Three, (1) 4 1/2" x 71 1/4" Fabric N strip and Column Four lengthwise, and in that order, to make the Center Block.

- 14.** Center (1) 4 1/2" x 83" Fabric N strip on one side of the quilt top. Start sewing the strip a 1/4" from the top edge of the quilt top and stop a 1/4" from the bottom edge. **DO NOT TRIM THE EXCESS.** Repeat with the opposite side.

- 15.** Repeat Step 14 to sew (1) 4 1/2" x 81" Fabric N strip to the top and (1) 4 1/2" x 81" Fabric N strip to the bottom of the Center Block, making sure to stop and start 1/4" away from each end of the Center Block.

- 16.** To miter each corner, fold the Center Block on a diagonal wrong side together. This should line up the strips from adjacent sides (Diagram 50).

- 17.** Starting at the sewn seam (represented by the arrow in Diagram 50) draw a 45-degree line out to the edge of the fabric. Sew on the drawn line. Trim the excess fabric leaving a 1/4" seam. Repeat this step with the remaining corners.

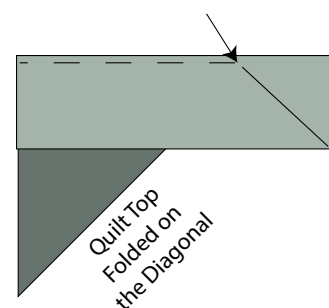


Diagram 50

- 18.** Sew (1) 2" x 79 1/4" Fabric L strip to each side of the Center Block. Sew (1) 2" x 80 1/4" Fabric L strip to the top and to the bottom of the Center Block.

- 19.** Sew (1) 8 1/2" x 82 1/4" Fabric D strip to each side of the Center Block. Sew (1) 8 1/2" x 96 1/4" Fabric D strip to the top and to the bottom of the Center Block to make the quilt top.

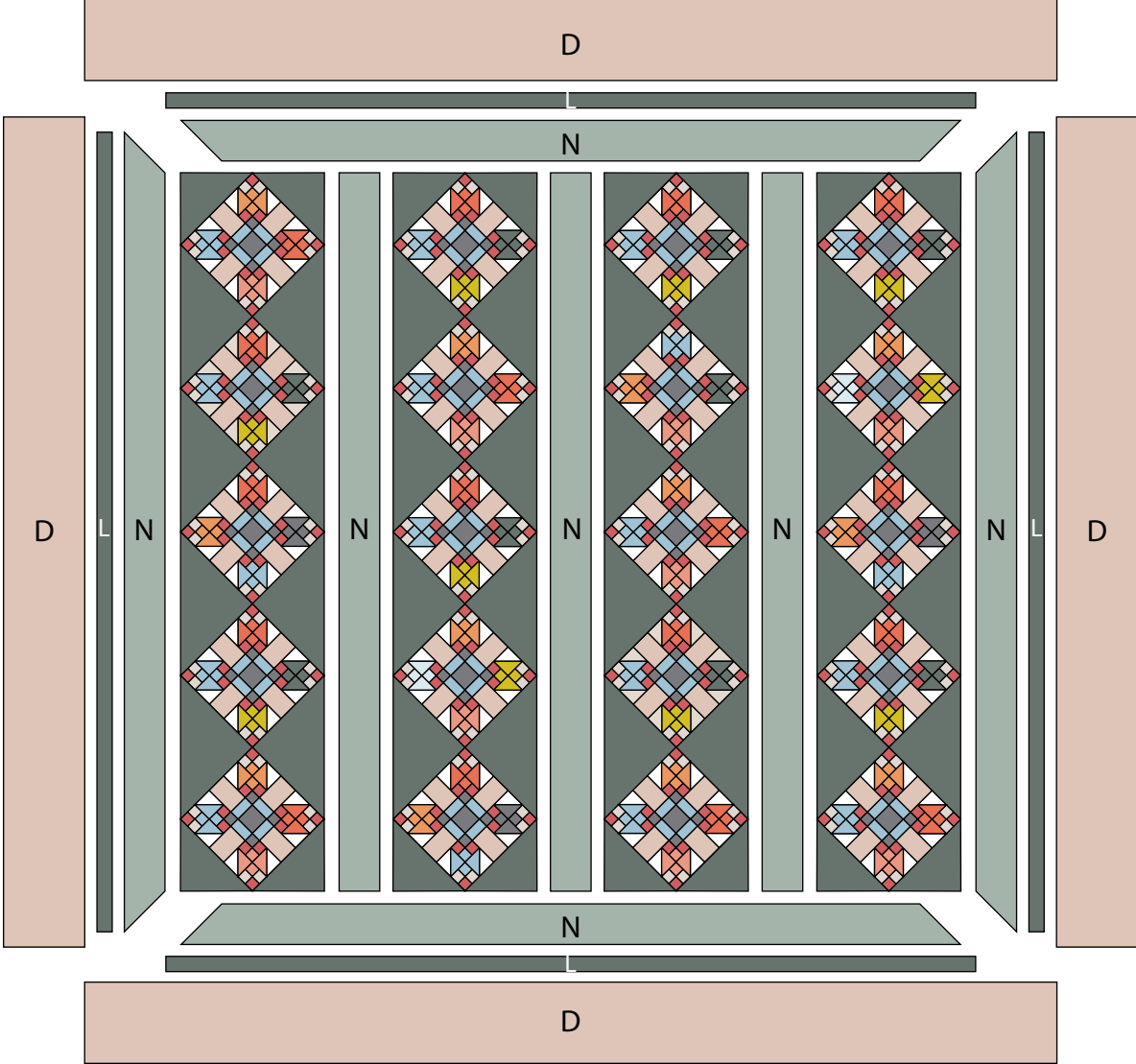
Finishing the Quilt

- 20.** Layer and quilt as desired.

- 21.** Sew the (10) Fabric L binding strips together, end to end with a 45-degree seams, to make the binding. Fold this long strip in half lengthwise with wrong sides together and press.

- 22.** Bind as desired.

Foxton Field



Quilt Layout

Chatham Hall

KATHY HALL



8996-L



8996-N



8997-L



8997-N



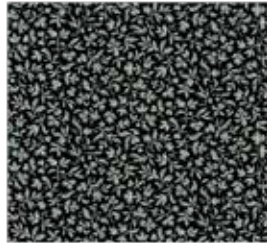
8998-L



8998-LG



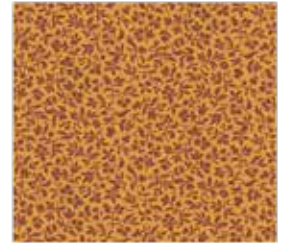
8998-N



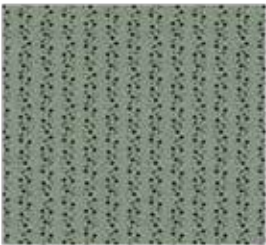
8999-L



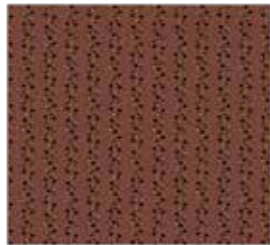
8999-N



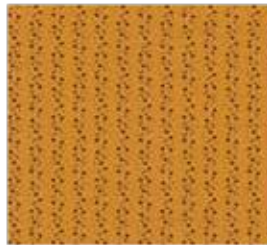
8999-NO



9000-L



9000-N



9000-NO



9001-L



9001-LN



9001-N



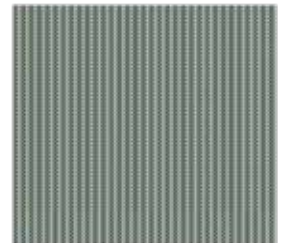
9002-L



9002-LY



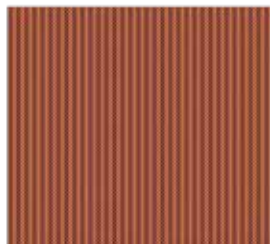
9002-N



9003-L



9003-N



9003-NR



9004-L



9004-LN



9004-N

About Our Fabrics

A recognized leader in the quilting industry, Andover Fabrics features designs by a wide variety of talented artists and licenses, including Downton Abbey and Eric Carle's Very Hungry Caterpillar. Catering to the tastes of creative and dedicated quilters, Andover has a style for everyone — authentic reproductions, romantic florals, modern and more.

Fabrics shown are 25% of actual size.

andover • makower.uk

Free Pattern Download Available

1384 Broadway New York, NY 10018
Tel. (800) 223-5678 • andoverfabrics.com